

**AICA**

By  **HPL**

ABOUT

# AICA



JAPAN **LISTED** COMPANY



**80 YEARS** Expertise in CHEMICAL INDUSTRIAL



**No.1** IN JAPAN Decor Surfaces



**TOP SALE** JPY 100,000 Million revenue/year ( THB 33,000 Million )

# AICA Business Introduction

AICA is pouring all our efforts into harnessing the core expertise in resin technologies to diversify our product portfolio.

## Four Departments to achieve the AICA SOLUTION



### CHEMICAL PRODUCTS



- Exterior and interior finish materials
- Floor coating materials
- Adhesives
- Construction and civil works repair and reinforcement materials

### DECOR SURFACES



- Melamine decorative panels
- Decorative boards
- Noncombustible decorative panels
- Decorative film

### BUILDING HOUSING & MATERIALS



- Interior doors
- Interior building materials
- Storage
- Countertops

### FUNCTIONAL MATERIALS



- Solar battery adhesives & sealants
- Automotive part adhesives and sealants
- Silicone materials
- Organic particles
- Electronic materials



# AICA SHOWROOM

space  AICA ALTINO



CORIAN<sup>®</sup>

AICA CRYSTA

AICA RENDU

MARBLEUR II

LAMINATED LUMBER

STEREO EDGE

VALUE EDGE

SAFE EDGE

POSTFORM VARIATIC  
ポストフォームバリエーション



STYLISH COUNTER



# JOLYPATE MATERIAL CORNER



BUILDING HOUSING & MATERIALS

## ABOUT



SOLE DISTRIBUTOR IN VIỆT NAM

- MISSION TO IMPROVE THE STANDARD OF DECORATIVE MATERIAL IN VIỆT NAM

- 10 YEAR EXPERIENCE IN THE INTERIOR DECORATION

Our team promise our client to service you at 100% capacity to ensure that buy extra material, got an extra service.

All you have to do is SPECIFIC decor from **HPL**. By this you will ensure the selected quality product for you project.



High Pressure Laminate  
メラミン化粧板



**CERARL**  
抗菌メラミン不燃化粧板 アイカセラル



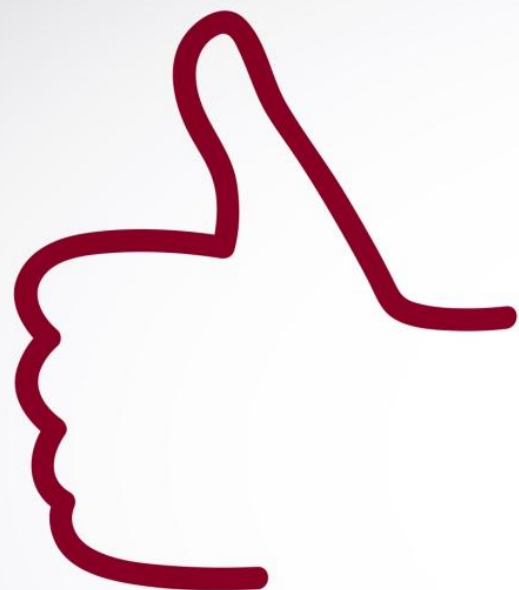
**Altyno**  
オルティノ

# High Pressure Laminate

メラミン化粧板

**ASIA COLLECTION 2016**  
HIGH PRESSURE LAMINATE





## PERFORMANCE of AICA HPL



Resistance  
to abrasion



Resistance  
to boiling



Resistance  
to heat



Rate of  
dimensional  
variation



Resistance  
to impact



Resistance  
to staining



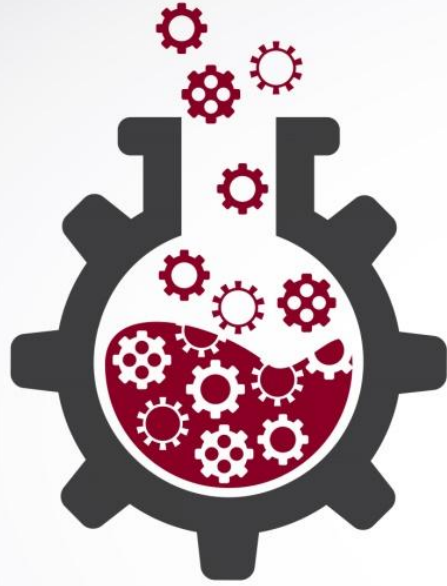
Resistance  
to light



Resistance to  
cigarette burns

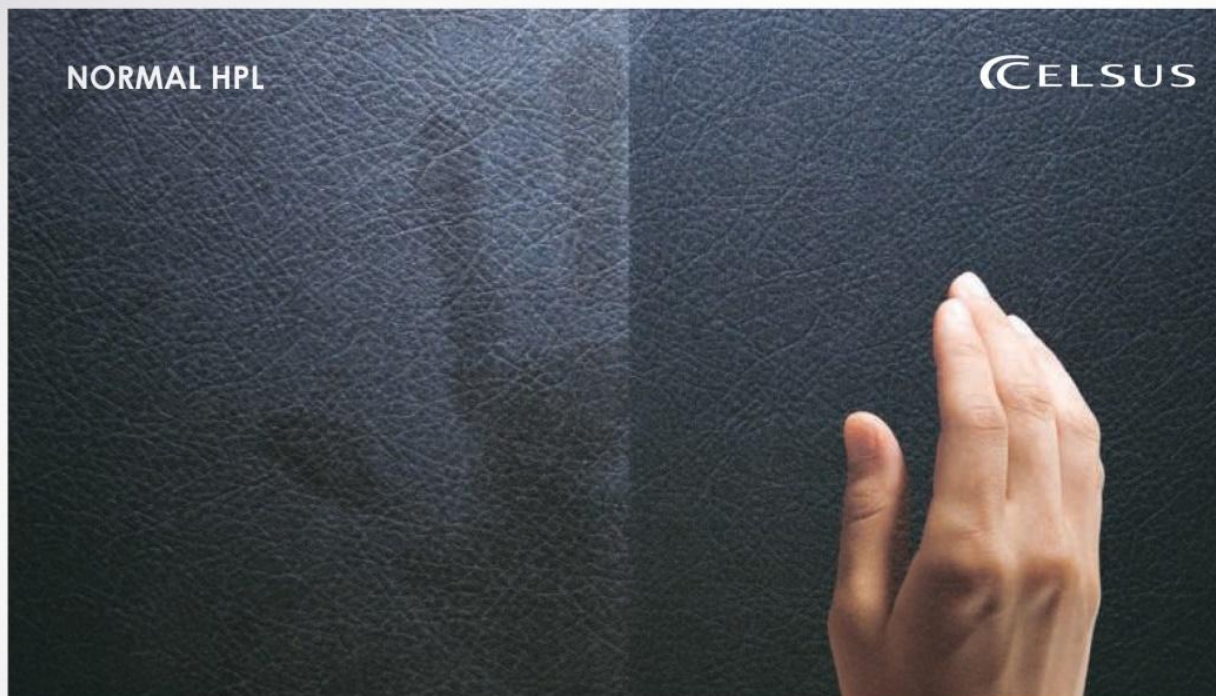


Resistance  
to hot water



**INNOVATION** of AICA HPL

- CELSUS
- SCRATCHLESS
- CHEMITECT Grade
- AICA FLARETECT
- MELACLEAN
- MELATAACK
- PREMIUM TEXTURE
- COLOR SYSTEM FIT
- AICA REAL CORE
- PLUS - WONDER



## Easy to Care

with “Celsus” an innovative fingerprints resistance.

“CELSUS” A next-generation decor surface of high design quality and functionality such as maintaining high durability and preventing fingerprint visibility.



# SCRATCHLESS

スクラッチレス



Current specifications



Scratch-resistant specifications

## ABRASION-RESISTANT

MELAMINE DECORATIVE PANELS

### Feature

Even brushing with steel wool will not leave abrasions.

\*In-house current past spec comparisons



フレアテクトは、  
2012年度グッドデザイン賞を  
受賞しました。



# FLARETECT

薄物メラミン不燃化粧板 フレアテクト

THE HIGH PRESSURE LAMINATE  
NONCOMBUSTIBLE AICA FLARETECT



100R  
processing is possible  
at room temperature.



Noncombustibility



Antibacterial



Highly Flexible



Safety,  
User friendly  
and comfortable



CERARL  
3.0 mm. Thickness



FLARETECT  
0.7 mm. Thickness



Applicable to  
curved faces



AICA FLARETECT



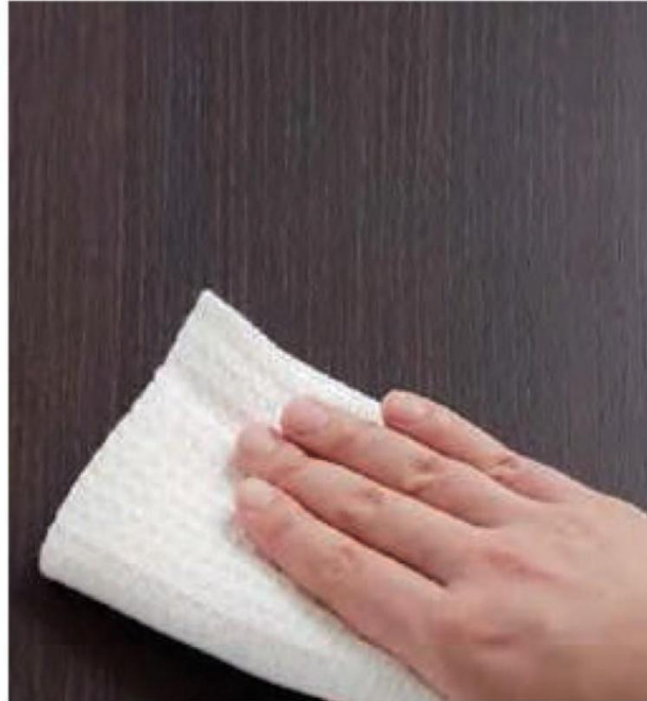
QTQ 587 CTD98

# MELACLEAN

メラクリン



Current specifications



Oil-repellent specifications

## OIL-REPELLENT HIGH PRESSURE LAMINATE SHEETS

“MELACLEAN” A new innovation decor surface of high design quality and functionality such as maintaining high durability and preventing oil visibility.

# MELATAACK

メラタック

“MELATAACK” A new innovation decor surface for EASY RENOVATION



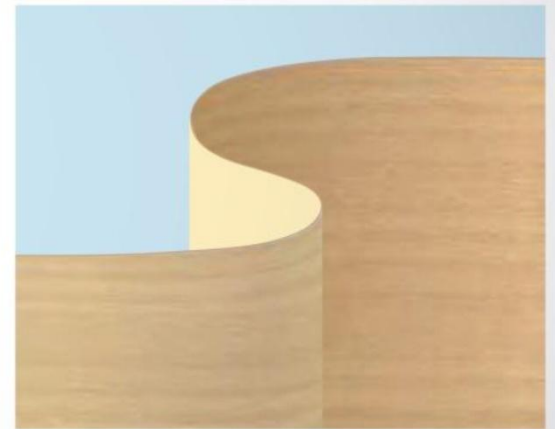
**EASY TO CUT**



**EASY INSTALLMENT**



**STRONG SURFACE**



**CURVABLE**

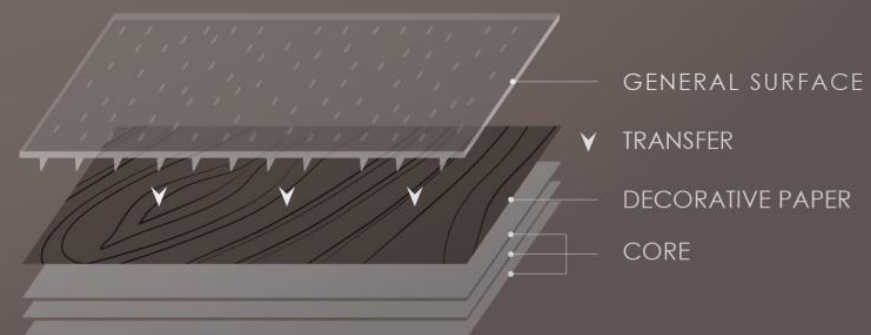
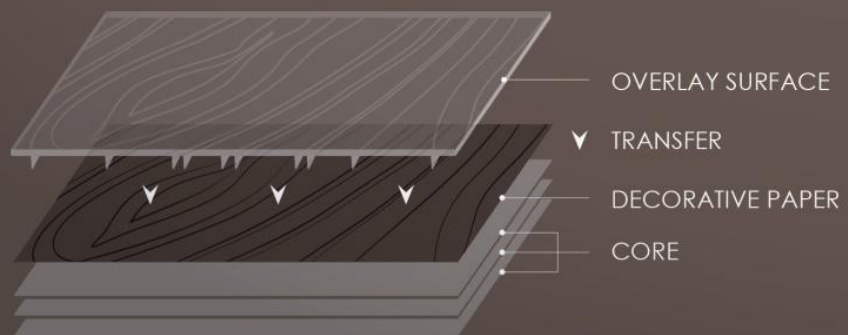
PREMIUM TEXTURE

GENERAL TEXTURE

# CELSUS

## —PREMIUM TEXTURE—

MAKING A DEDICATED SURFACE AGAINST THE GRAIN PATTERN, REALISTIC WOOD SURFACE FEELING.



# AICA COLOR SYSTEM FIT

表面色がもっとも映える化粧板コア



WHITE CORE



GREY CORE



YELLOW CORE



BROWN CORE



BLACK CORE

## HPL with sharpest surface color

AICA High pressure laminate sheets come in 5 colors suited to match surface colors and patterns: white core, grey core, yellow core, brown core and black core. Our Color System Fit optimization of surface pattern and core color achieves deeper blacks, drab-free whites and more vivid colors.

# AICA REAL CORE

表面色がもっとも映える化粧板コア



BROWN CORE



YELLOW CORE

## FAST & EASY INSTALLATION

WF-3180Z MULTI STRIPE WOOD / Mixed (セーブル CERARL)  
WF-3183Z THAILAND TEAK / Natural (セーブル CERARL)  
WF-3181Z EURO OAK / Natural (セーブル CERARL)  
WF-3189Z QUEEN MAHOGANY / Red Stain (セーブル CERARL)  
WF-3185Z MOCHA WALNUT / Grege (セーブル CERARL)



+WONDER

WONDERS WILL NEVER BORE YOU.

+WONDER" is a collaboration brand established by  
AICA KOGYO and LIGHT CUBE, a textile design company.

## AICA HIGH PRESSURE LAMINATE CERTIFICATES

- ISO 9001:2008  
Quality management system
- ISO 14001:2004  
Environmental management system
- JIS  
Japanese industrial standard K6902
- GREENGUARD  
Greenguard & Greenguard gold
- Green label Singapore
- FSC  
Forest Stewardship Council
- THE BIOMASS MARK  
No.120030



Certificate ID04/61548



Certificate ID05/00581



042-007  
Environmentally Improved  
Low Emission Low Toxicity



Japanese Industrial Standard



バイオマス  
No. 120030

# LAMINATE DECOR LOW CHEMICAL EMISSION

ALL AICA HPL are EXTREMELY LOW chemical

This product has been certified to meet the chemical emissions requirements for UL Greenguard Gold Certification (formerly know as Greenguard children & Schools Certification)

Reference Standard : UL 2818 GREENGUARD Gold Certification Program for Chemical Emissins for Building Materials, Finishes and Furnishings



Certification Details :  
Certificate No : 20397-420  
Status : Certified  
Period : 08/2011 - 08/2013  
Restrictions :

GREENGUARD Acceptable IAQ Criteria		Product Measurement
Test	Greenguard Children and School	
TVOC	$\leq 0.22 \text{ mg/m}^3$	$< 0.001 \text{ mg/m}^3$
Formaldehyde	$\leq 0.0135 \text{ ppm}$ or $13.5 \text{ ppb}$	$< 0.001 \text{ ppm}$
Total Aldehydes	$\leq 0.043 \text{ ppm}$ or $43 \text{ ppb}$	$< 0.001 \text{ ppm}$
1-Methyl-2-Pyrrolidinone	$\leq 0.16 \text{ mg/m}^3$	$< 0.001 \text{ mg/m}^3$
Individual VOCs	$\leq 1/100 \text{ TLV}$ or $< 1/2 \text{ chronic REL}$	See Below
Total Phthalates	$\leq 0.01 \text{ mg/m}^3$	$\leq 0.01 \text{ mg/m}^3$

Based on a standard worksurface usage (  $12.3 \text{ m}^2$  ) in a  $231 \text{ m}^3$  classroom with 0.82 ACH.

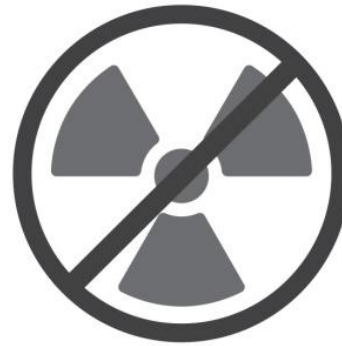
## STRONG POINT of AICA HPL



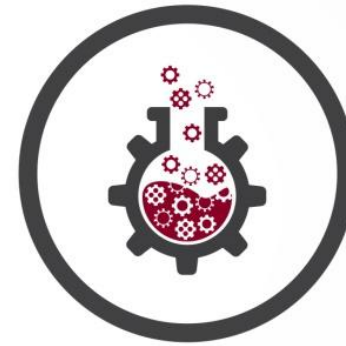
ANTIBACTERIAL



HIGH PERFORMANCE



LOW CHEMICAL  
EMISSION



INNOVATION



FRIENDLY  
ENVIRONMENT



# CERARL

抗菌メラミン不燃化粧板 アイカセラル

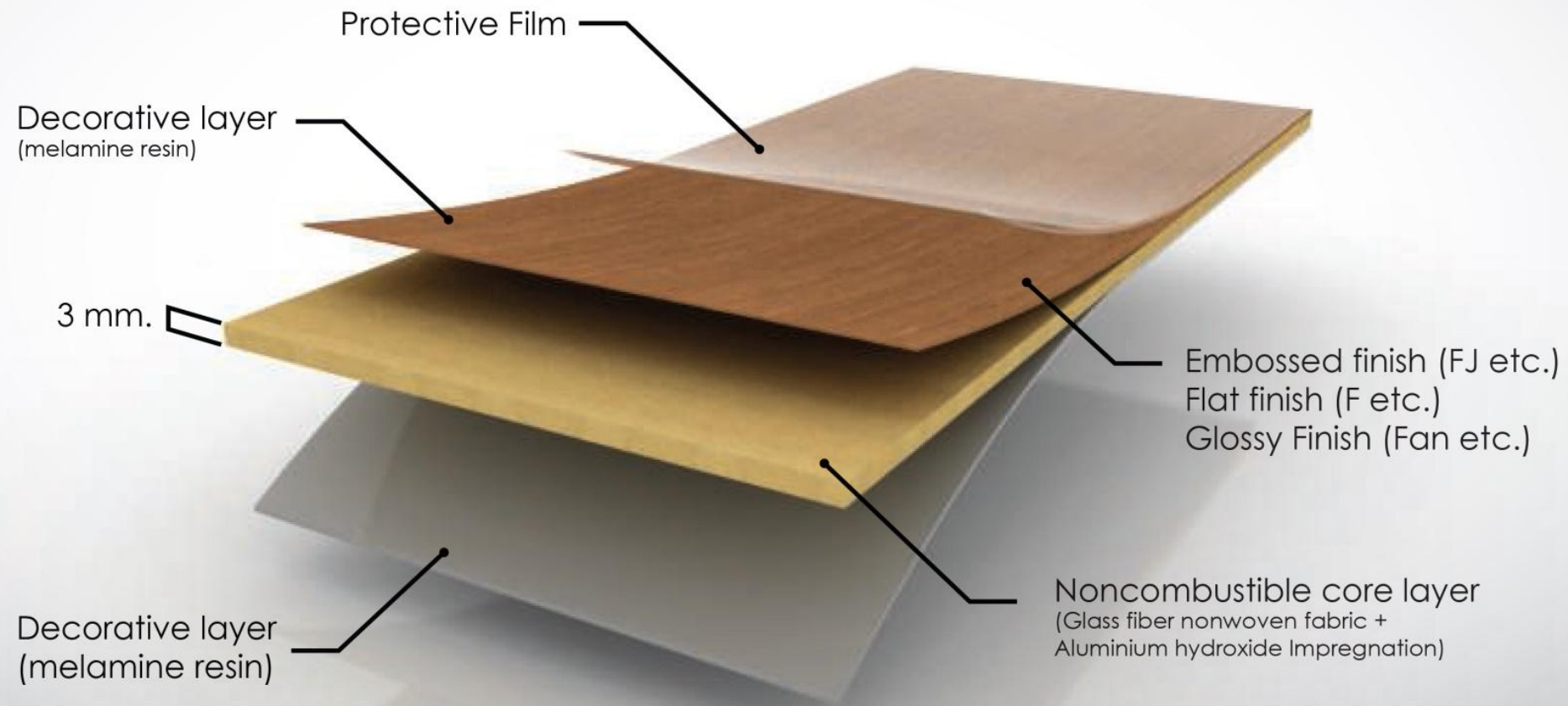
Noncombustible decorative panels

CERARL IS :

THE MATERIAL  
THAT **ANSWER EVERY QUESTION**

# COMPOSITION OF CERARL

(Glass fiber nonwoven fabric + Aluminium hydroxide Impregnation)





## PERFORMANCE of CERARL



NON  
FLAMMABLE



HIGHLY  
DURABLE



NON TOXIC  
& HYGIENIC



ANTIBACTERIAL



CHEMICAL  
RESISTANCE



FRIENDLY  
ENVIRONMENT

EASY TO CARE

LONG LASTING

COMPONENT  
FOR DESIGN SUPPORT

CELSUS

FAST & EASY  
INSTALLATION

# INSTALLMENT of CERARL

CERARL are designed to install in the easiest way and reduce construction time and cost.

- Cerarl can install to most of substrate.
- Use only AICA SE-1x adhesive



Plaster board



Gypsum board



Plywood



Aluminum frame



Mortar



Tile

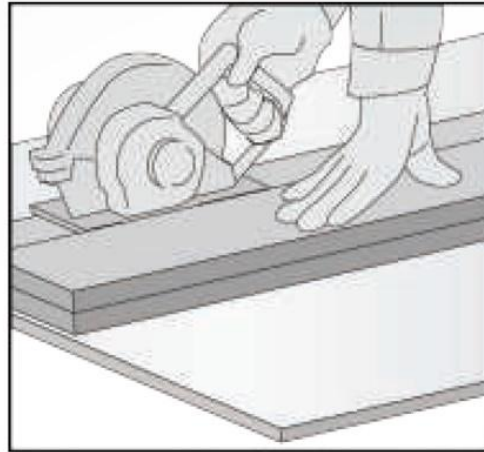
## CERARL can be install on

1. Directly to Mortar
2. Gypsum board
3. plywood, MDF and other fiber base panel
4. Aluminum frame
5. Ceramic tile (please carefully check tile before install)
6. Other existing material please check

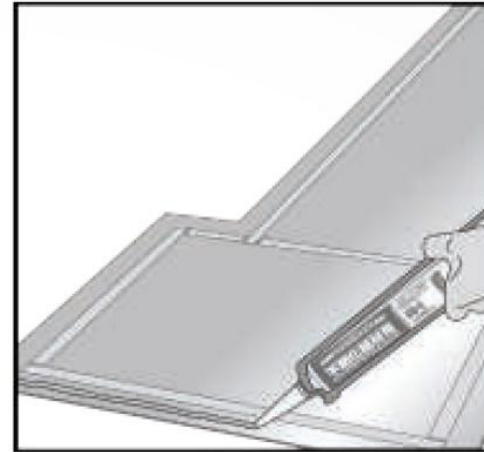
# EASY INSTALLMENT



**STEP 1.**  
Planning-layout



**STEP 2.**  
Cutting & machining



**STEP 3.**  
Pasting temporary  
tacking tape and  
applying adhesive  
agent



**STEP 4.**  
Pasting and crimping

# CERARL ACCESSORIES : Aluminum joiner

## COLOR VARIATION

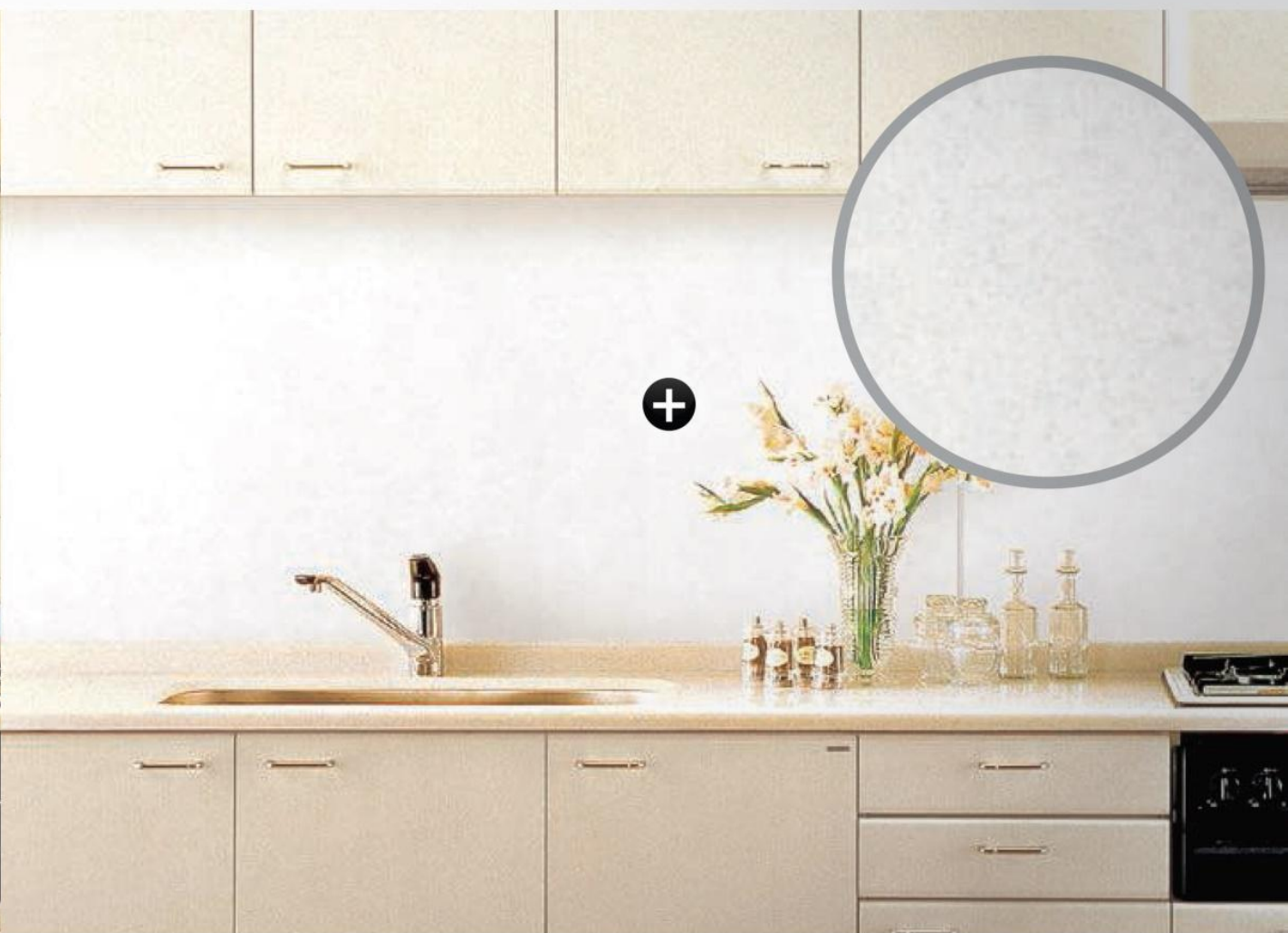
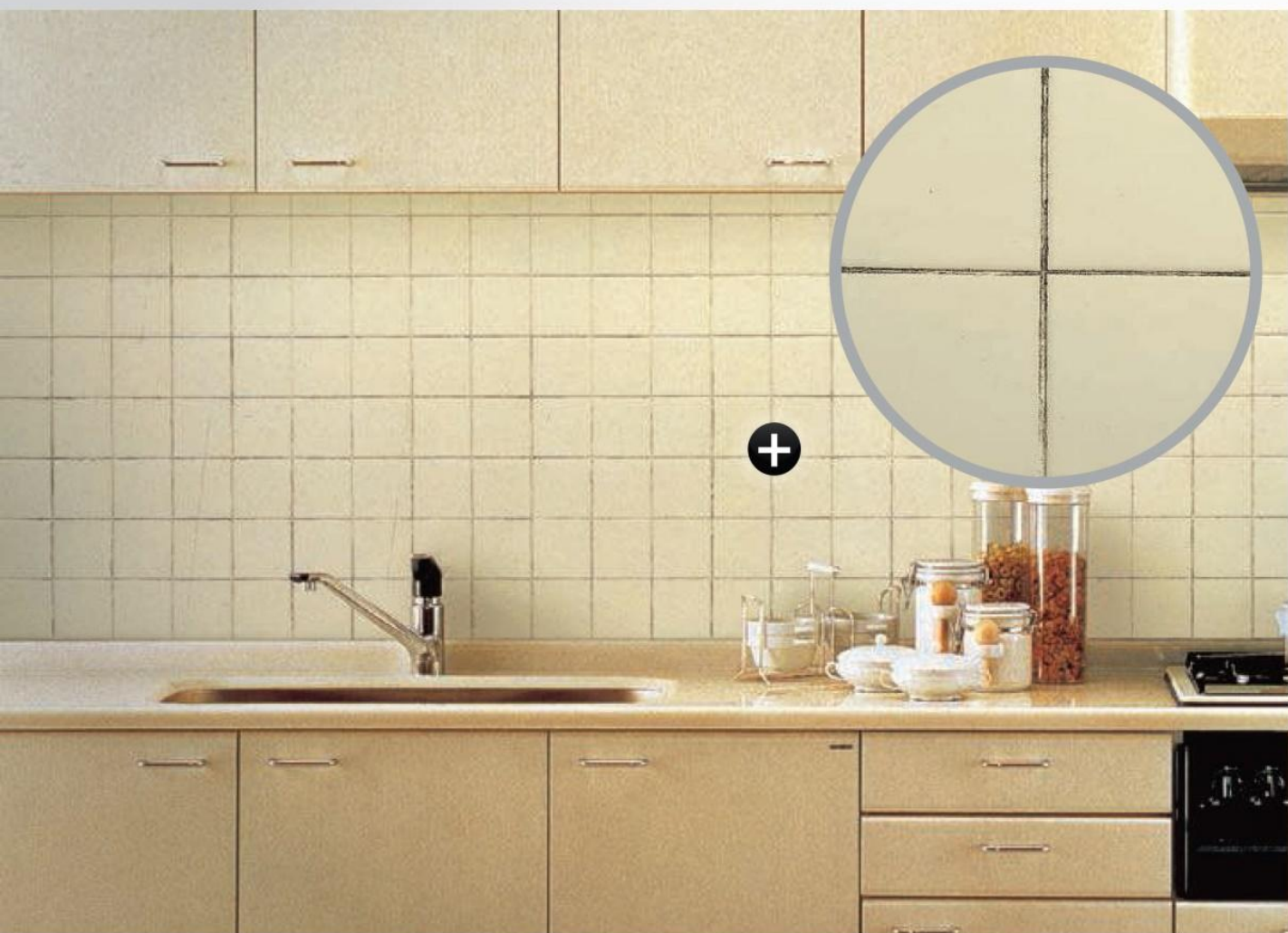
Color No.	Sliver 1	Ivory 3	Beige 4	Pale-Beige 5	Ice white 7
Aluminum joiner Photo					
	Snow white 8	Light orange OLO	Light rose LRO	Dark gray DGR	Dark brown DBR
					



## Gram habitate@Phuket



# RECOMMENDED Use | KITCHEN WALL



# RECOMMENDED Use | W/C Wall

RENOVATION



RECOMMENDED Use

CORRIDOR Wall & Ceiling



RECOMMENDED Use | SURGERY ROOM

## CERARL CERTIFICATES

- ISO 9001:2008  
Quality management system
- ISO 14001:2004  
Environmental management system
- JIS  
Japanese industrial standard K6902
- GREENGUARD  
Greenguard & Greenguard gold
- JECTEC  
Japan Electric Cable Technology Center
- SAC  
Singapore Accreditation Council
- SIAA ISO 22196  
Measurement of antibacterial activity  
on plastics and other non-porous surfaces



Certificate ID04/61548



Certificate ID05/00581



Japanese Industrial Standard



## STRONG POINT of CERARL



NON  
FLAMMABLE



HIGHLY  
DURABLE



NON TOXIC  
& HYGIENIC



ANTIBACTERIAL



CHEMICAL  
RESISTANCE



FRIENDLY  
ENVIRONMENT

# *Altyno*

オルティノ

A premium design decorate film made by  
photogravure printed resin film with adhesive coating on the backside.



Grace Wood



Metallic Wood



Wood Grain



Material



Metallic



Plain Color

# *Altyno*

オルティノ

**A HD QUALITY DECORATIVE FILM**  
made by photogravure printed resin  
film with adhesive coating on the  
backside. It's high flexibility allowed  
to apply on curvature constructions  
where traditional panel cannot fit.

442<sub>ALL</sub>  
DESIGN



# *Altyno*

オルティノ

## INFORMATION

Altyno Film (decorative adhesive film)	Item Code	Size		
		Width	Roll	Thickness
Altyno (wood grain)	VW	1.230 m	50 m	≈ 0.2mm (peel paper excluded)
Altyno	VG			
Altyno (grace wood)	VK			
Altyno (plain color)	VKK			



PERFORMANCE of *Altyno*  
オルティノ



FAST



HIGH DESIGN



EASY TO APPLY



NEAT



LOW TOXIC  
EMISSION



# AICA Wedge Press Noncombustible

ウェッジプレス不燃 オルティノタイプ



# AICA Wedge Press Noncombustible

ウェッジプレス不燃 オルティノタイプ



リップル系



QA-2051L01

木目方向 ⇄



QA-2051L02

木目方向 ⇄

グリッド系



QA-2051G01

木目方向 ⇄

スカルプチャー系



QA-2051S01

木目方向 ⇄

ダイヤ系



QA-2020D03

木目方向 ⇄



QA-2020D02

木目方向 ⇄

クリスタル系



QA-2020C01

木目方向 ⇄



QA-2020C02

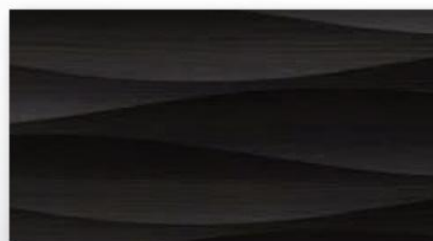
木目方向 ⇄

ウェーブ系



QA-511W02

木目方向 ⇄



QA-511W03

木目方向 ⇄



QA-511W01

木目方向 ⇄



QA-511W04

木目方向 ⇄

**AICA HPL**  
TJ-571 K

**AICA Marless Noncombustible**  
PK-571 C

**CERARL**  
FJ-571 ZD

**AICA Marless Boards**  
BB-571

**ALTYNO**  
VG-571 A

**AICA HPL**  
TJ-571 K

**AICA Polyester Plywood Sheets**  
LP-571

**HARMONIZE DESIGN**  
アイカだからできる“トータルコーディネート”

AICA PRODUCTS  
PROJECT  
REFERENCE





III

## TOKYO SKYTREE @ 634 MUSASHI Restaurants 東京スカイツリータウン

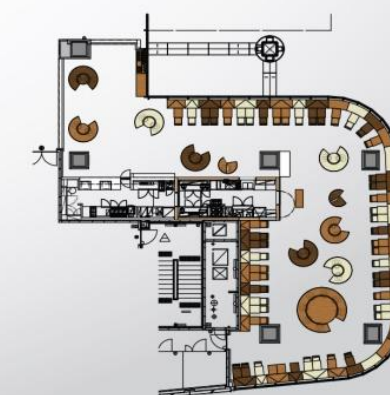




| 最優秀賞 |

## Nana's green tea グランフロント大阪店

設計／KAMITOPEN一級建築士事務所 吉田昌弘、津秦理世、幅中 仁  
撮影／宮本啓介



円形パーティション：  
オルティノ フィルム  
VW-652A  
VW-403A  
VW-703A

テーブルベンチ：  
メラミン化粧板  
TJY652K  
TJY403K  
JI-703K



## CLASUWA くらすわ

くらすわ CLASUWA 設計／株式会社竹中工務店 東京本店設計部 関谷和則 撮影／ナカサアンドパートナーズ  
AICA 施工例コンテスト 2013 特別賞



### 歴史と自然を映す、地域文化の発信拠点

諏訪湖に面した複合商業施設。地元の食と四季を楽しむ、地域文化の発信拠点でもある建物には、酒蔵などの歴史ある周辺建物と、信州の自然との調和が求められた。直線で構成された外観は一見モダンな印象だが、積層するコンクリートの水平な小庇は、木造建築の瓦屋根や庇の重なりを思わせる。コンクリート素地と好対照をなすチャコールグレーの外壁にはジョリパットを使用。陰影のある立体的な表情は、熊手引き仕上げのグラデーションで実現した。

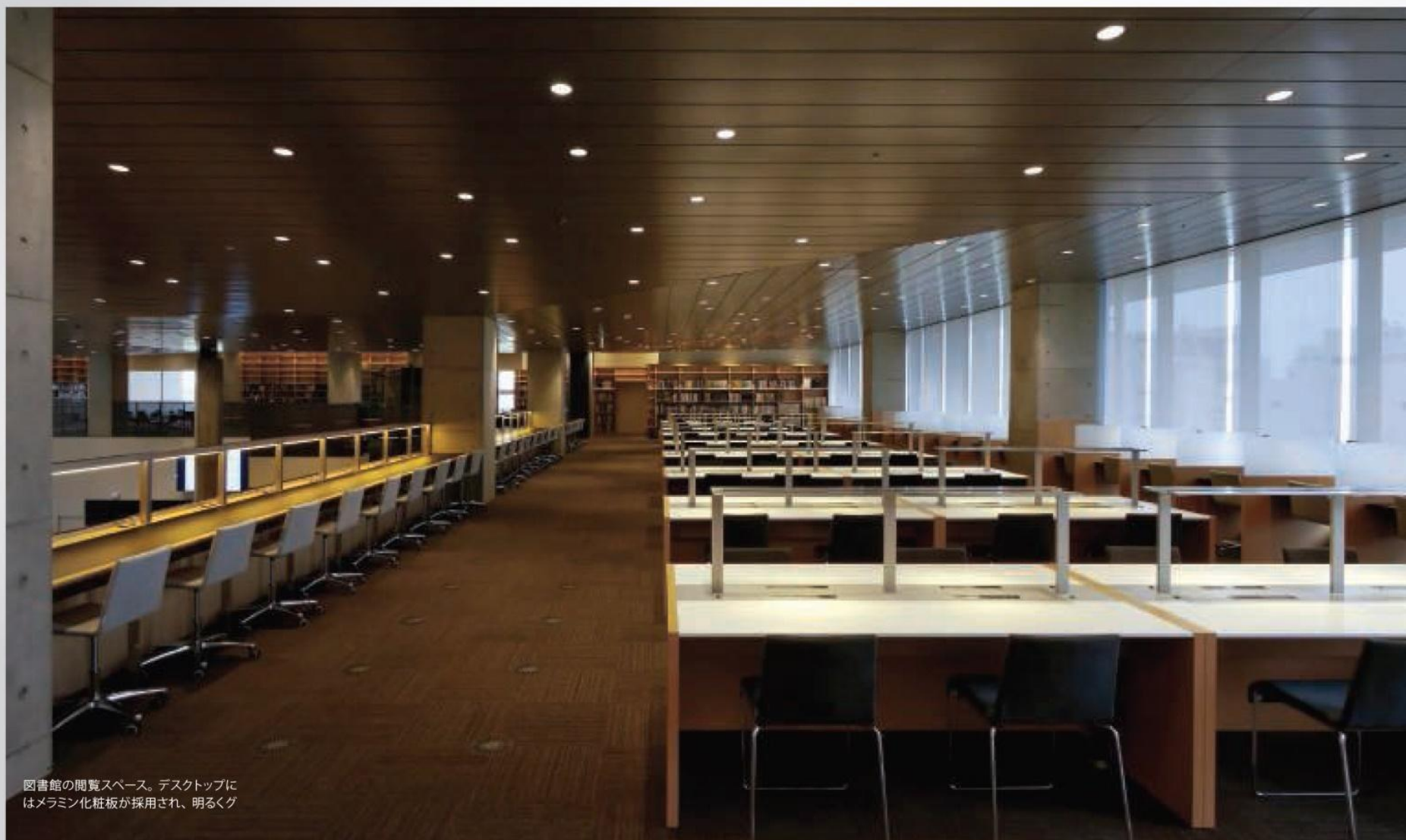
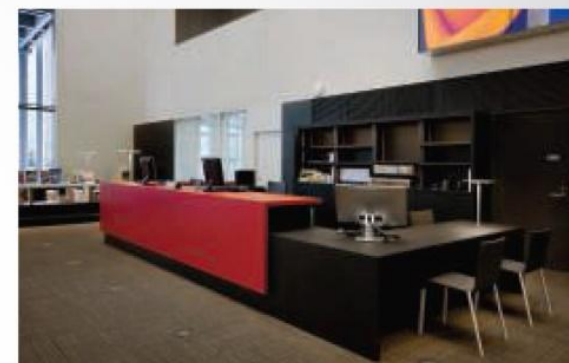
メラミン化粧板 TJY2051K



# Tokyo University Library

東京理科大学葛飾キャンパス  
図書館

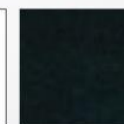
建築設計/株式会社日建設計 岩崎克也、竹内 稔、石崎健一  
家具デザイン/株式会社日建スペースデザイン 伊豆省洋、鈴木規子、芝崎裕子  
家具製作/紀伊國屋書店 ニシザキ工芸  
撮影/有川幸雄



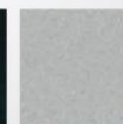
図書館の閲覧スペース。デスクトップにはメラミン化粧板が採用され、明るく



メラミン化粧板  
K-6000KN



メラミン化粧板  
TK-6400K



メラミン化粧板  
PJ-6302KF71



メラミン化粧板  
TJY147K



メラミン化粧板  
C-6522BN



メラミン化粧板  
TK-6400K



# Narita International Airport

## Japan Airlines International check-in counter

成田国際空港 日本航空国際線チェックインカウンター





## Asakusa Culture Tourist Information Center Tokyo, Japan





UNIQLO  
ユニクロ



COPYRIGHT ©  2016 COMPANY LIMITED. ALL RIGHTS RESERVED

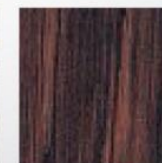


## SHIBUYA "CHIKAMICHI" LOUNGE

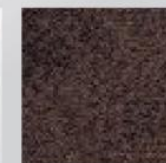
Location : First basement floor of Shibuya Station.  
Designer : Mika Ninagawa



TJ-681 K



TJ-602 KL





# Building 1 (Seimei Hall) @ Chukyo University in Nagoya

Design / Sumitomo Mitsui Construction ARCHITECTS



デザイン横貼り



①セラル  
FJ-5872D (特注)



②セラル  
FJ-2932D (特注)



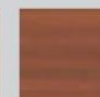
③セラル  
FJ-25562D (特注)



④セラル  
FJ-5722D (特注)



オルティノ  
VG-587A  
(ルーバー背面に使用)



⑥セラル  
FJ-26672D (特注)



## U PLAT KANAYAMA @ NAGOYA

名古屋鉄道金山駅構内  
金山プラザ改修工事



VW-2050 A

VW-2051 A



CERARL ①  
FTN 465 ZN

CERARL ②  
FTN 465 ZN



# Terrazza Shirokane Restaurant @Tokyo

設計/ヒラモトデザインスタジオ 平本英行  
撮影/ナカサンドパートナーズ 藤井浩司

- C-6200 BM
- TJY-2050 K  
VW-2050 A
- TJ-462 K  
VG-462 A





## ShinQs Switch Room B3F Open STAGE

施主／株式会社東急百貨店

設計／株式会社丹青社 町田怜子、吉田麻紀 プランニング／東中川華子

撮影／株式会社エスエス企画



JC-683K , TJY464K



# Shibuya Modi | Shopping in Shibuya, Tokyo

渋谷モディ

設計・施工／株式会社エイムクリエイツ



TJY499KT62

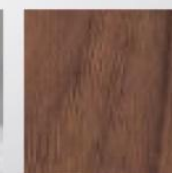
VW-499C



# Shibuya Modi | Shopping in Shibuya, Tokyo

渋谷モディ

設計・施工／株式会社エムクリエイツ



■ JI-2555K

■ JI-2555K

■ FJ-2555ZD



## STYLISH COUNTER

ブランシエラ検見川浜マイム

設計 / 株式会社長谷工コーポレーション



使用部品・製品を見る  
アイカスタイリッシュカウンター  
TJY469K



STYLISH COUNTER

Plan collection

# Rest Room for House

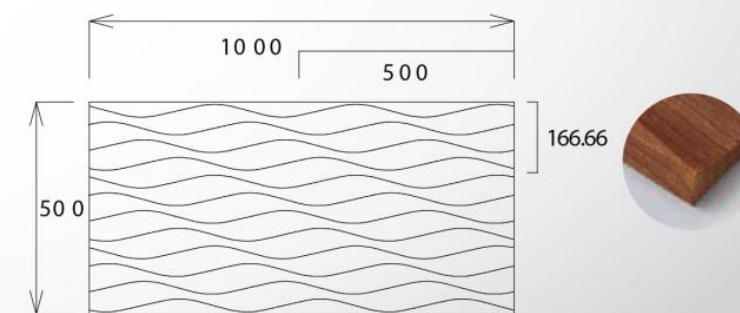
一般住宅 セカンド洗面 / 一般住宅 洗面手洗い





# Saiseikai Yokohamashi Tobu Hospital

聖蹟こころ眼科 設計／株式会社田中俊行建築空間設計事務所



ウェーブ仕上

QA-2050 W01

# SWEETS TERRACE

## SWEET TERRACE PREMIERE YOKOHAMA

設計／ピエロ・デザイン&ワークス株式会社 二宮浩二



VG-599 A





KITCHEN WALL

ブランシエラ浦和駒場

設計・施工/株式会社長谷工コーポレーション





# OFFICE

近年、作業性重視の合理的な空間ではなく  
快適で働く人々の感性に呼応するオフィス空間が増えつつある。  
機能美を備えたアイカの製品によって  
新しい時代のワークプレイスが誕生する。



FKJ 6000 ZYN23



## 109 CINEMAS FUTAKO TAMAGAWA & IMAX

設計／株式会社フィールドフォー・デザインオフィス 大久保敏之 島田雄太  
撮影／ナカサンドパートナーズ 辻谷 宏



VW-654A

JQ-200T1036

THAILAND  
PROJECT  
REFERENCE





PROJECT REFERENCE THAILAND

HOSPITAL STYLE



โรงพยาบาลสมิติเวช ศรีราชา  
SAMITIVEJ SRIRACHA HOSPITAL



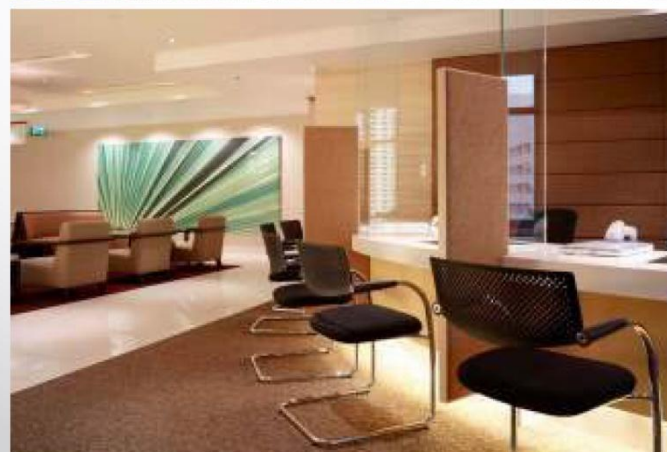


PROJECT REFERENCE THAILAND

HOSPITAL STYLE



**Bumrungrad**  
International





PROJECT REFERENCE THAILAND

## HOSPITAL STYLE



โรงพยาบาลศิริรินทร์  
*Sikarin Hospital*



โรงพยาบาลกรุงเทพ  
BANGKOK HOSPITAL





PROJECT REFERENCE THAILAND

PROPERTY STYLE



SANSIRI

BAAN MAI KHAO  
@PHUKET





PROJECT REFERENCE THAILAND

PROPERTY STYLE



LAND & HOUSES

LANDMARK  
Ekamai-Ramindra

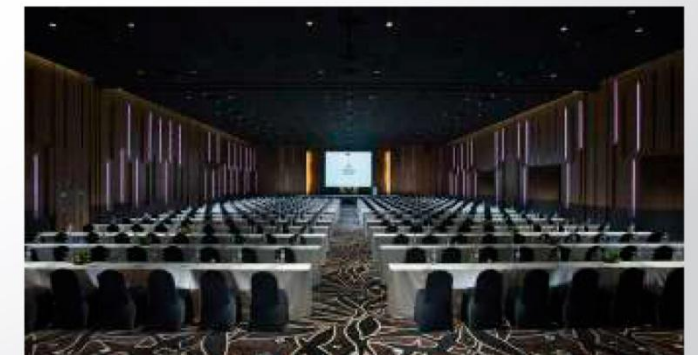


PROJECT REFERENCE THAILAND

PROPERTY STYLE



Hilton Phuket  
Arcadia resort & Spa





PROJECT REFERENCE THAILAND

Q House Condo  
Sukhumvit 79

PROPERTY STYLE

Q house Sukumvit 79





PROJECT REFERENCE THAILAND

RETAIL STYLE



THE CRYTAL SB RATCHAPRUEK





PROJECT REFERENCE THAILAND

RETAIL STYLE



## OWNDAYS Mega Bangna



VW-499C





PROJECT REFERENCE THAILAND

RETAIL STYLE



ST.MARC CAFÉ

Central World (3rd Floor)  
Central Festival East Ville (Ground Floor)  
Central Plaza Bangna (Ground Floor)



# 2013-2016

## PROPERTY

- Hilton Phuket Arcadia resort & Spa
- Dusit D2 @Chiang Mai
- BAAN MAI KHAO @PHUKET by SANSIRI
- The LANDMARK Ekamai-Ramindra  
by LAND & HOUSES
- Rhythm Sathorn Narathiwas by AP
- Rhythm Rangnam by AP
- Rhythm Sukhumvit 36-38 by AP
- Q House Condominium @Sukumvit 79
- Suaplai Premier @Ratchathewi

- Station One Condominium เชียงราย
- The Kump Condominium ชลบุรี
- My Hip Condominium @Chiang Mai
- The Tressure Condominium @Chiang Mai
- The Summer หัวหิน
- Nikko Hotel Bangkok
- D Condo @Chiang Mai
- The Art Hotel @Sukhumvit 18
- Silk Place @Phahoyothin Laksi
- VOQUE PLACE Condominium @Sukumvit 107

## OTHERS

- โรงเรียนเด่นหล้า พระราม 5
- TMB Bank Public Co., Ltd.
- Sindhorn Tower
- Mango Tree @Yodpiman River Walk
- Miyazaki restaurant Bangkok
- The coffee bar lighting cafe



# 2013-2016

## RETAIL

- ANA Lounge @Suwannaphum Airport
- Central Plaza West Gate @Bang Yai
- Central Future park rangsit
- Emquartier Food hall
- Siam Square One
- The Mall Korat
- ZPELL @Future Park Rangsit
- The Street @Ratchada
- Lotus @Samut Sakorn
- DTAC @Central Plaza West Gate
- DTAC @Future Park Rangsit
- DTAC @CentralFestival East Ville
- DTAC @บุรีรัมย์
- Fuji Japanese Restaurant
- Shabu King
- Mister Donut
- CP Fresh mart
- Boonthavorn Showroom
- KPN
- Yamaha @Central Salaya
- Fujio Secon Square
- MG Luxury @Hatyai
- HONDA @Srinakarin
- TOYOTA Showroom
- HINO @Rama II
- ISUZU @Phetchabun
- ISUZU @Nan
- Thai Asahi Factory
- Daikin Factory
- Posco Thainox Office
- Paul Frank Shop
- Mogen
- 304 Kabinburi
- Villa medica @Intercontinental Hotels
- JAL SAKURA
- OWNDAYS @Mega Bangna
- ST.MARC CAFE @CentralWold
- ST.MARC CAFE @CentralFestival East Ville
- ST.MARC CAFE @Central Plaza Bangna



# 2013-2016

## HOSPITAL

- โรงพยาบาลบำรุงราษฎร์
- โรงพยาบาลสมิติเวช สุขุมวิท
- โรงพยาบาลสมิติเวช ศรีราชา
- โรงพยาบาลกรุงเทพไชน่าทาวน์
- โรงพยาบาลกรุงเทพอุดร
- โรงพยาบาลกรุงเทพขอนแก่น
- โรงพยาบาลกรุงเทพศูนย์วิจัย
- โรงพยาบาลศิริรินทร์ ศรีนครินทร์
- โรงพยาบาลศิริรินทร์ หาดใหญ่
- โรงพยาบาลเจตนิน





GLOBAL WARMING

# ESTIMATE THAT FORESTS TODAY



Act now before  
it's too  late.





STYLISH DÉCOR

**HPL HPL COMPACT IMPORT-EXPORT JOINT STOCK COMPANY**

NO 2 LANE 6A PHAM VAN DONG STREET, MAI DỊCH WARD  
CAU GIAY DISTRICT, HA NOI CITY, VIET NAM

T: +84 4 3792 0833

VACHVN@GMAIL.COM

F: +84 4 3792 1079

[HTTP://HPL.COM.VN](http://HPL.COM.VN)



STYLISH DÉCOR

**COMPACT SAIGON IMPORT-EXPORT., JSC**

62/3K THOI TAM THON 6, THOI TAM MON WARD  
HOC MON DISTRICT, HO CHI MINH CITY, VIET NAM

SHOWROOM: 02 CHAU THOI, WARD 15  
DISTRICT 10, HO CHI MINH CITY, VIET NAM

T: +848 908 521 618  
+848 909 884 581

LUAN.CPSG@GMAIL.COM  
VUCAO71@GMAIL.COM